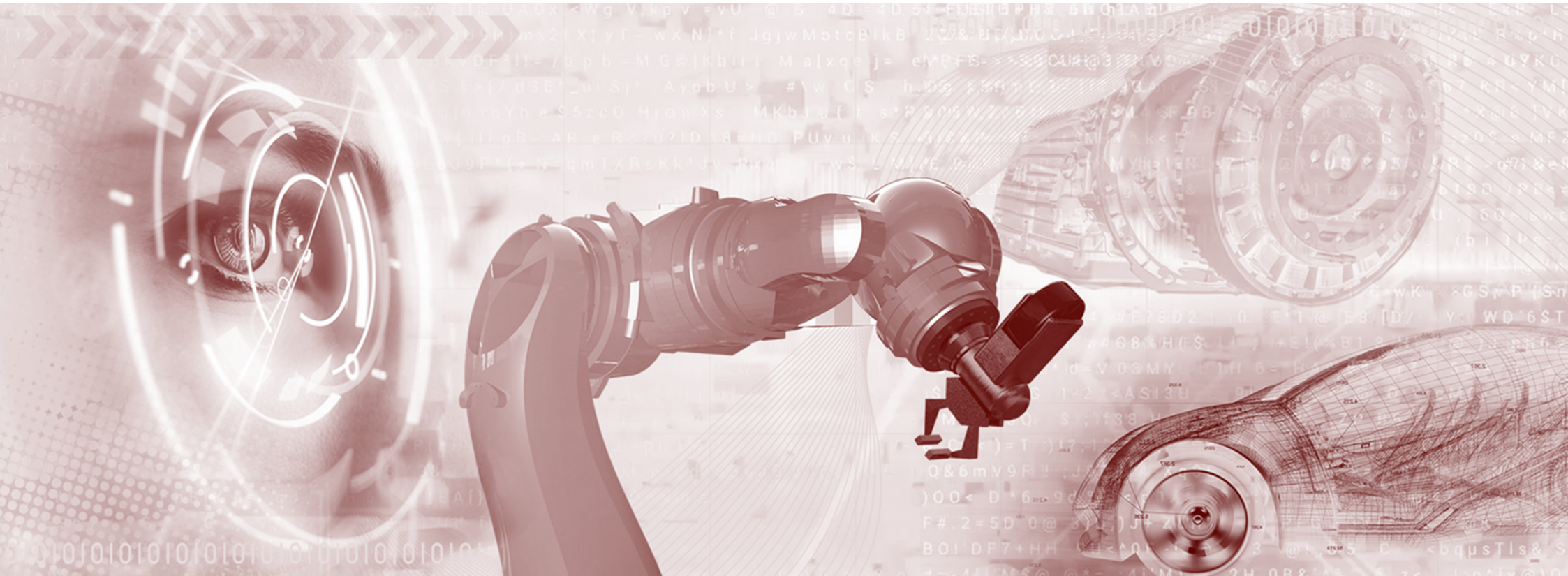




Universität Stuttgart  
Institute of Aircraft Design

# Digitaler Prototyp

## Infiltration Simulation and Virtual Permeability Determination for the Digital Prototype



# ARENA2036

DigitPro - J. Dittmann, P. Middendorf

Datum: 25 – 26. Juni 2018

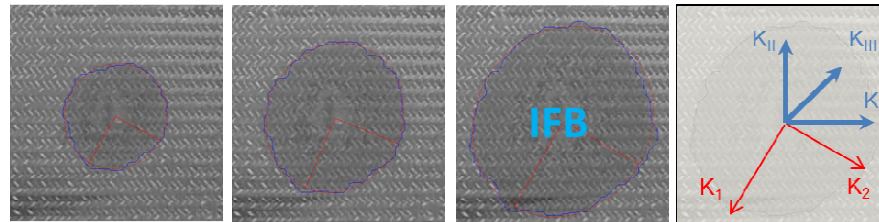
Ort: 15. Deutsches LS-Dyna Forum, Bamberg, 2018

- How to predict permeability values of near-net-shape parts with varying fibre orientations ?

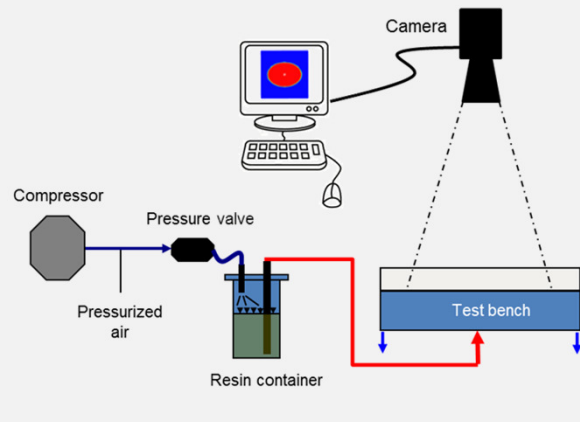




## Experimental permeability determination

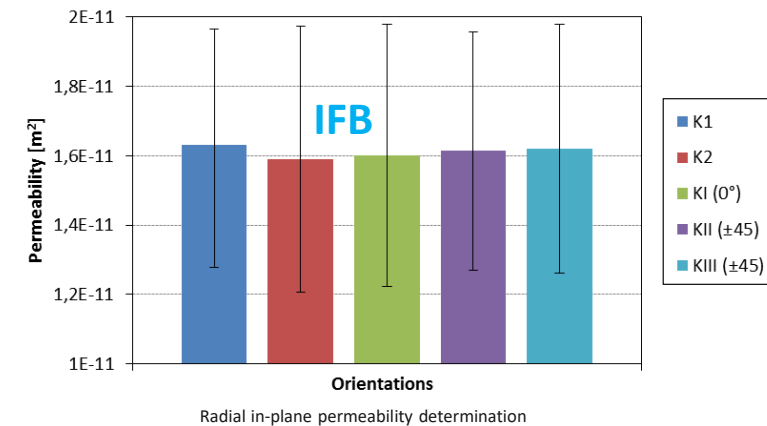


Flow front development after 28,3 s; 43,3 s und 63,3 s

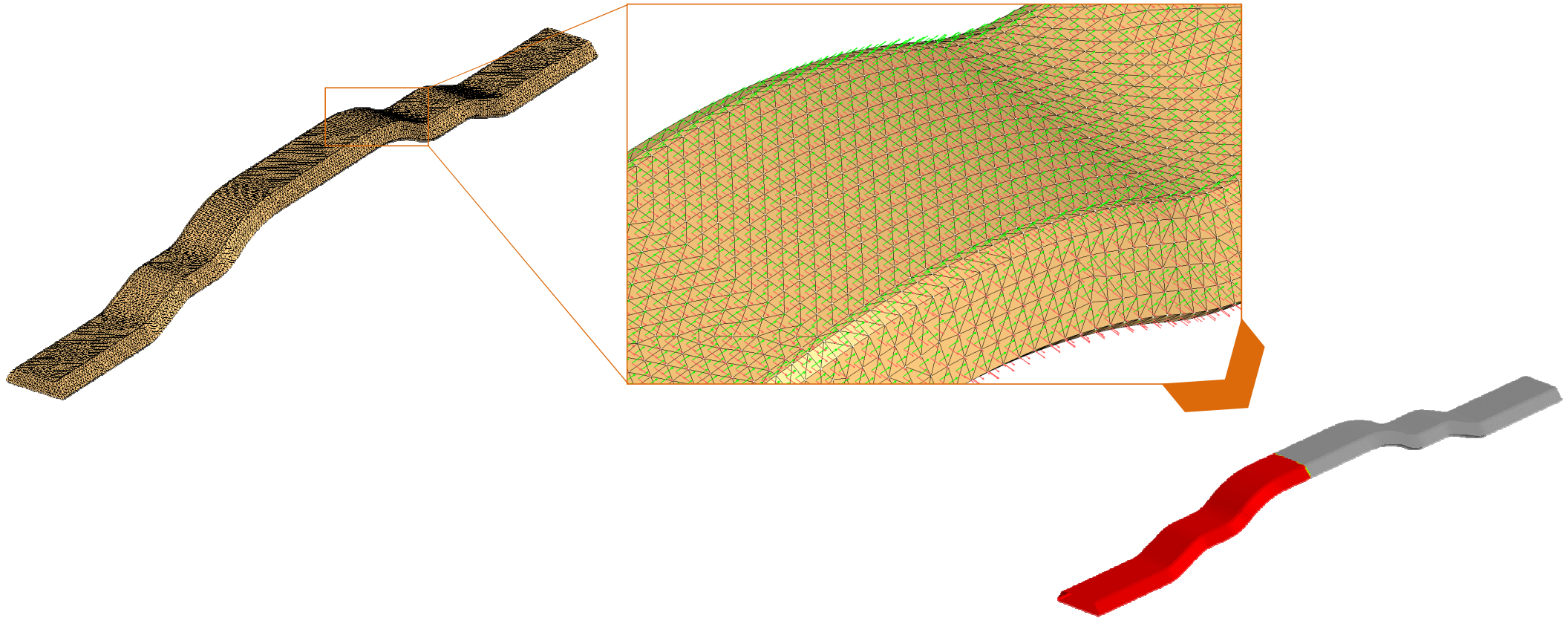


### Data / alternative Facts:

- Infiltration pressure: 2 bar
- FVC: 52 %
- 4 layer triaxial braid: Toho Tenax 12K (589 g/m<sup>2</sup>; 0/±45)
- Fluid: Glycerol 85 %
- Aluminum bottom mould
- PMMA top mould + Steel stiffeners

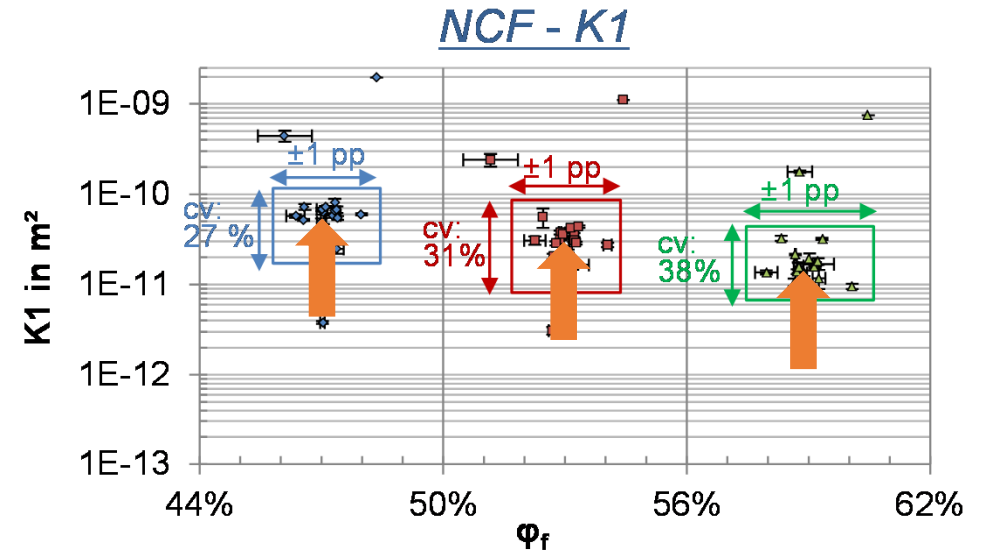


Classical way of permeability determination.



Classical way of FEM filling simulation.

- How to predict permeability values of near-net-shape parts with varying fibre orientations ?
- What to do with big variations in permeability results ?
- How to validate permeability values if we don't know what is right ?



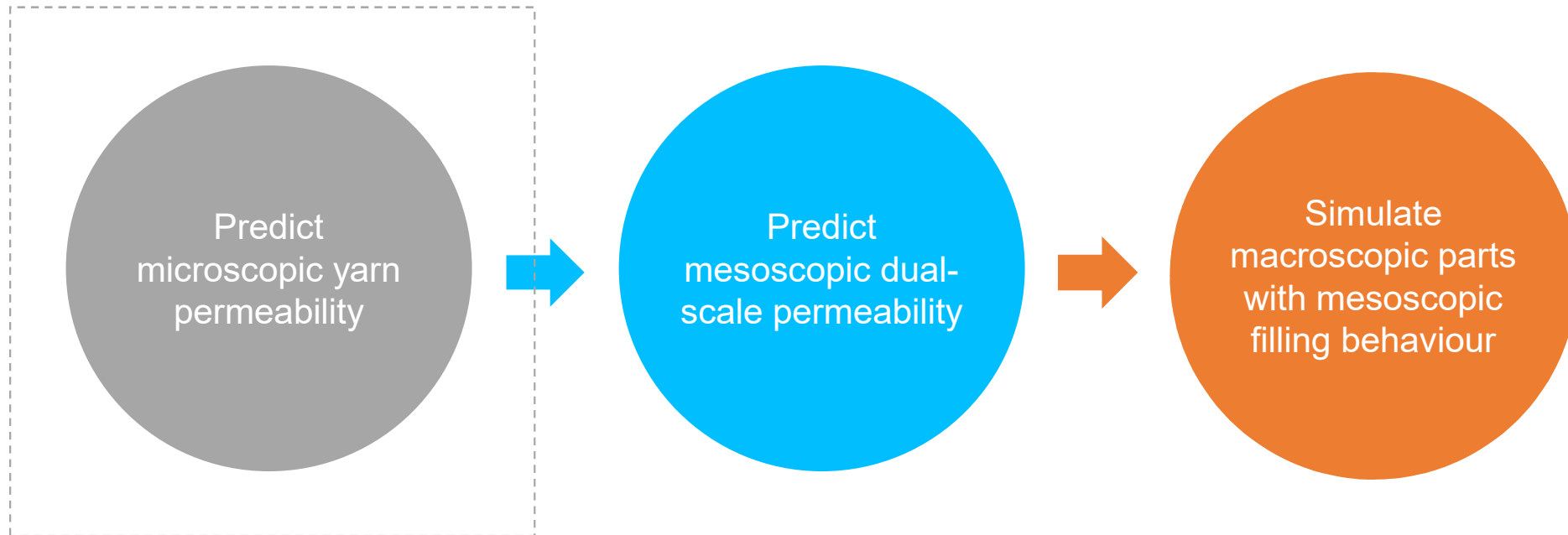
$\phi_f$  = fiber volume content, calculated with fvc-wise averaged areal weight, cavity deformation NOT considered

**cv** = coefficient of variation (referring to original values, NOT logarithmic values)

**pp** = percentage points

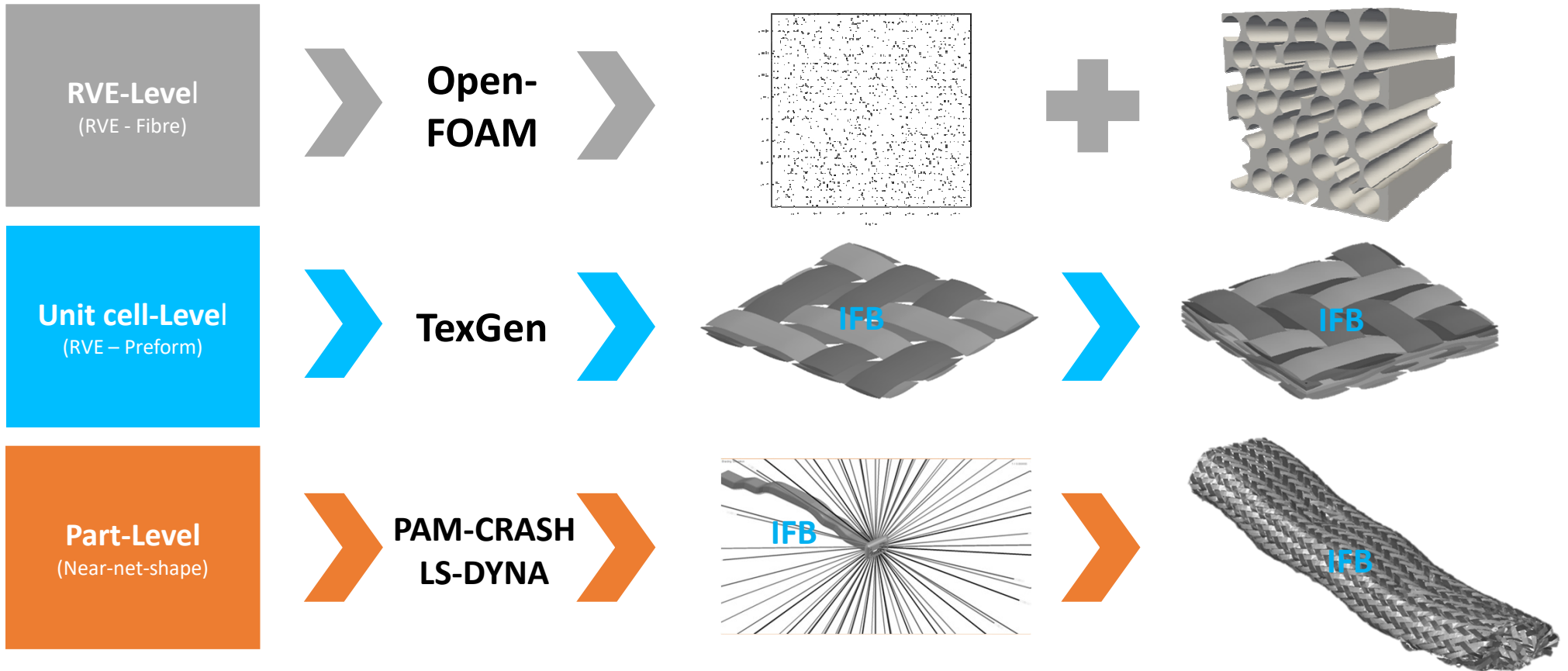
[1]

[1] D. May, A. Aktas and A. Yong, International Benchmark Exercises on Textile Permeability and Compressibility Characterization, ECCM, 2018



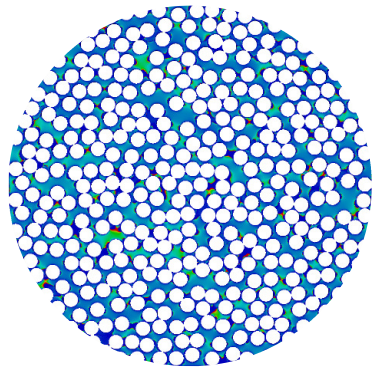
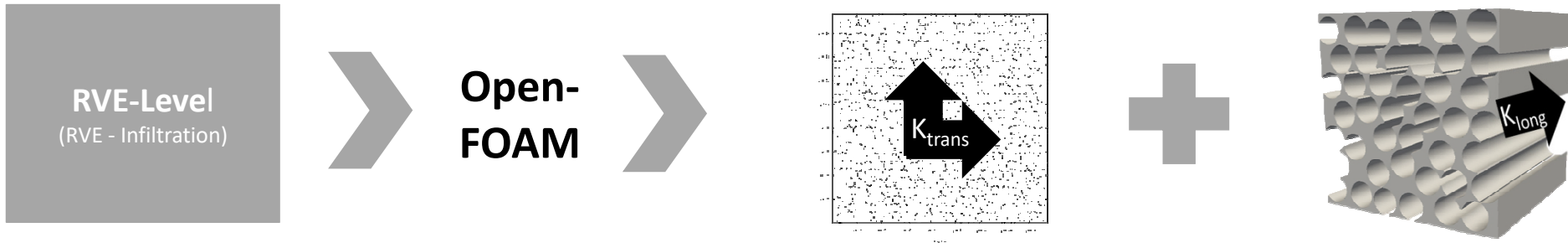


Multi-Scale Fiber  
Architecture &  
Flow Simulation

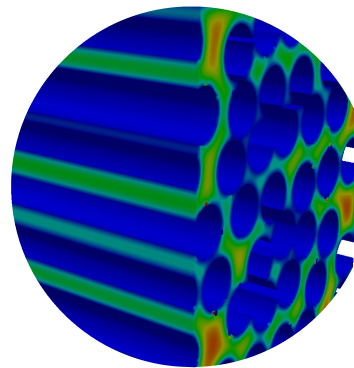


How to model micro/meso textile architecture ?

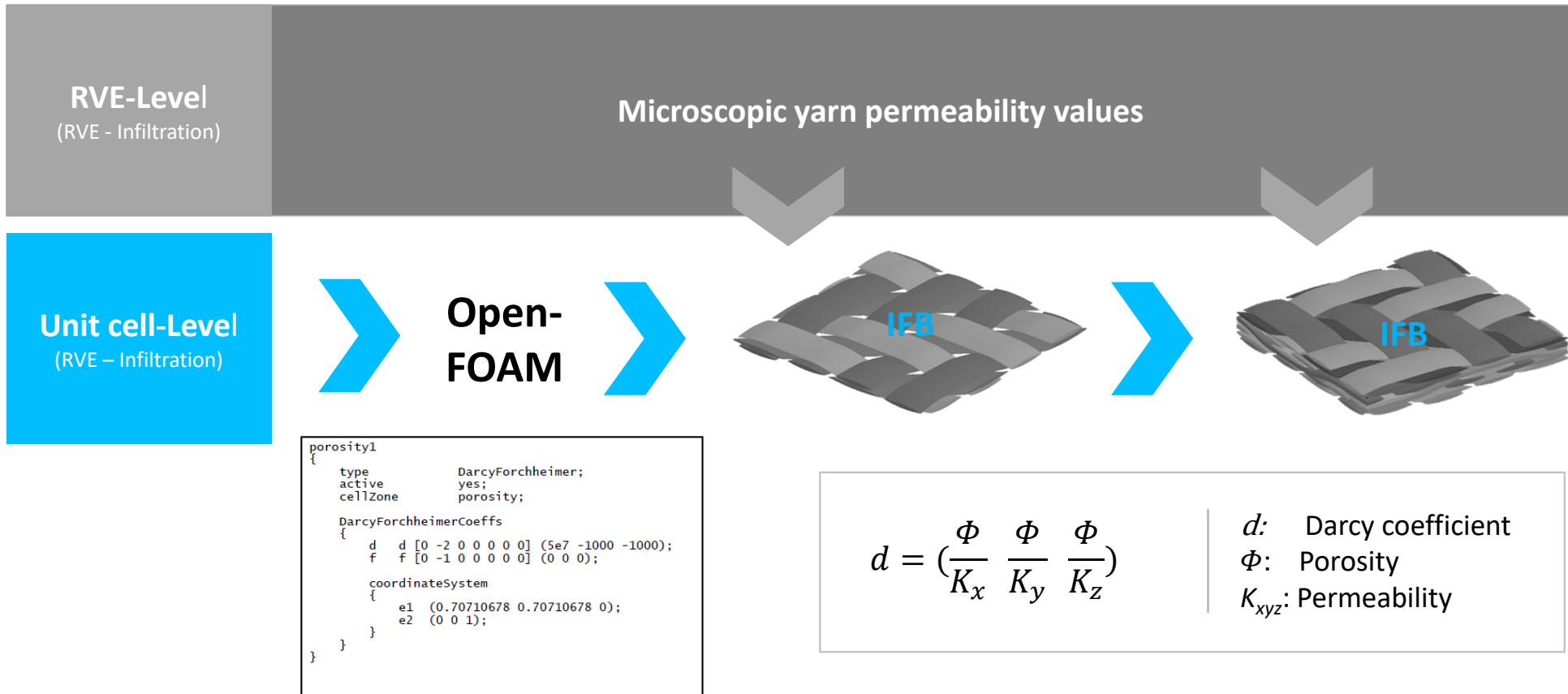




Yarn permeability (perpendicular)

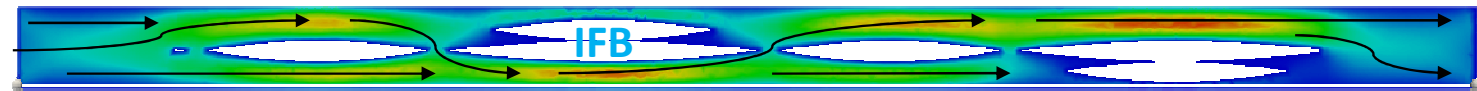
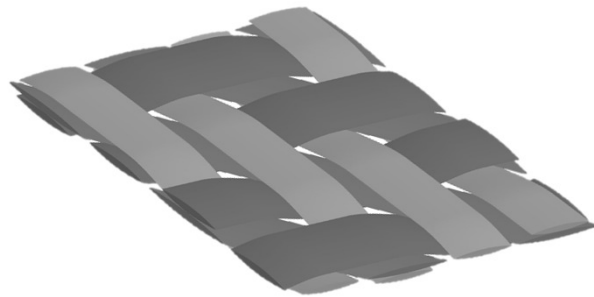
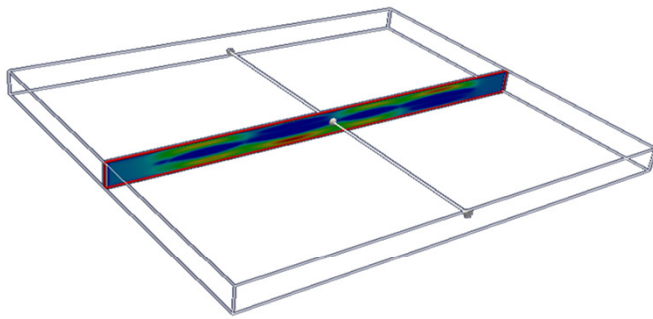


Yarn permeability (longitudinal)

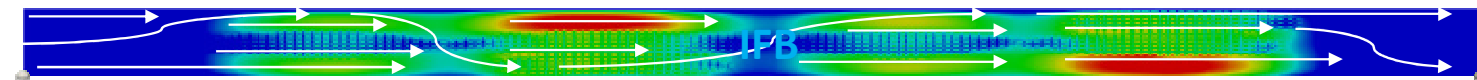


How to implement yarn permeability ?

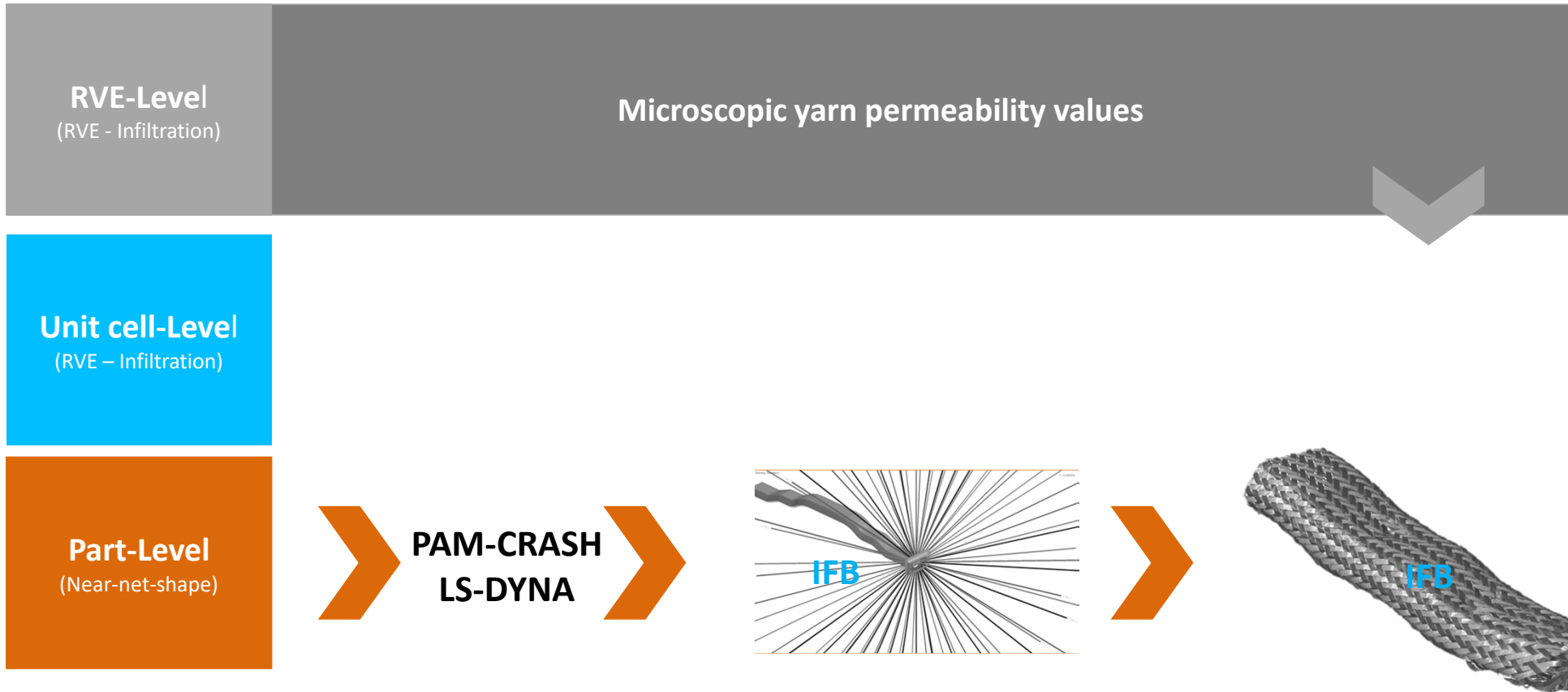
Dual Scale Flow – How does it work in OpenFoam?



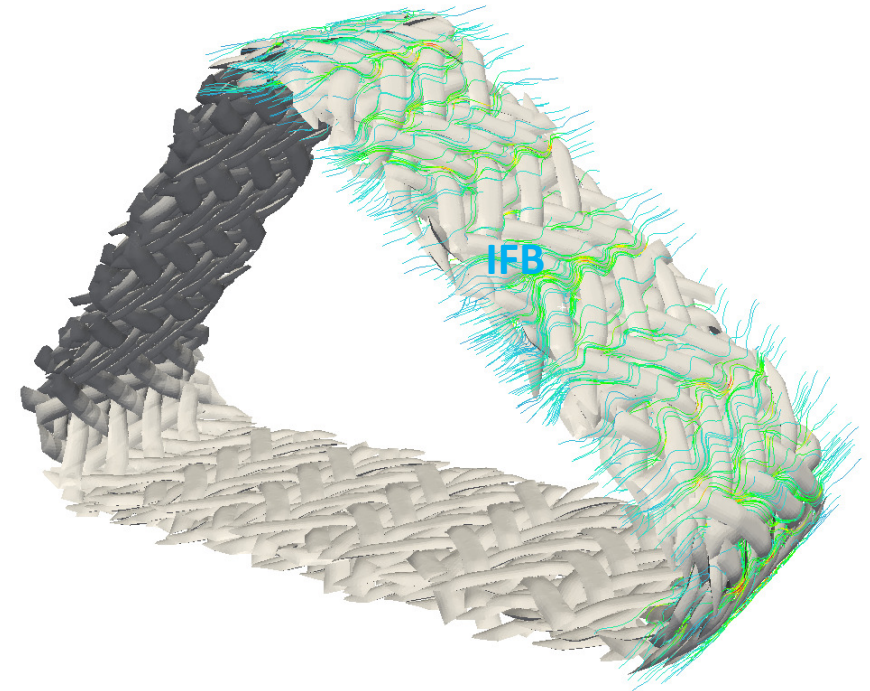
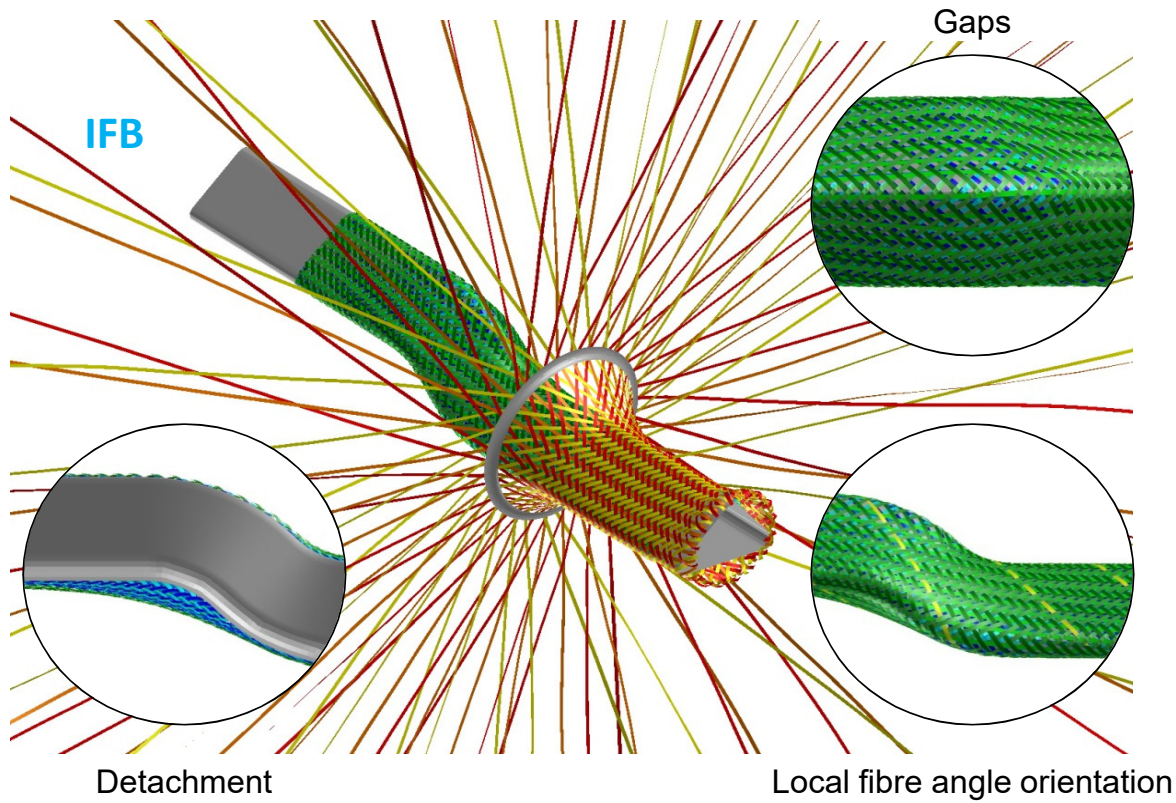
Inter tow flow

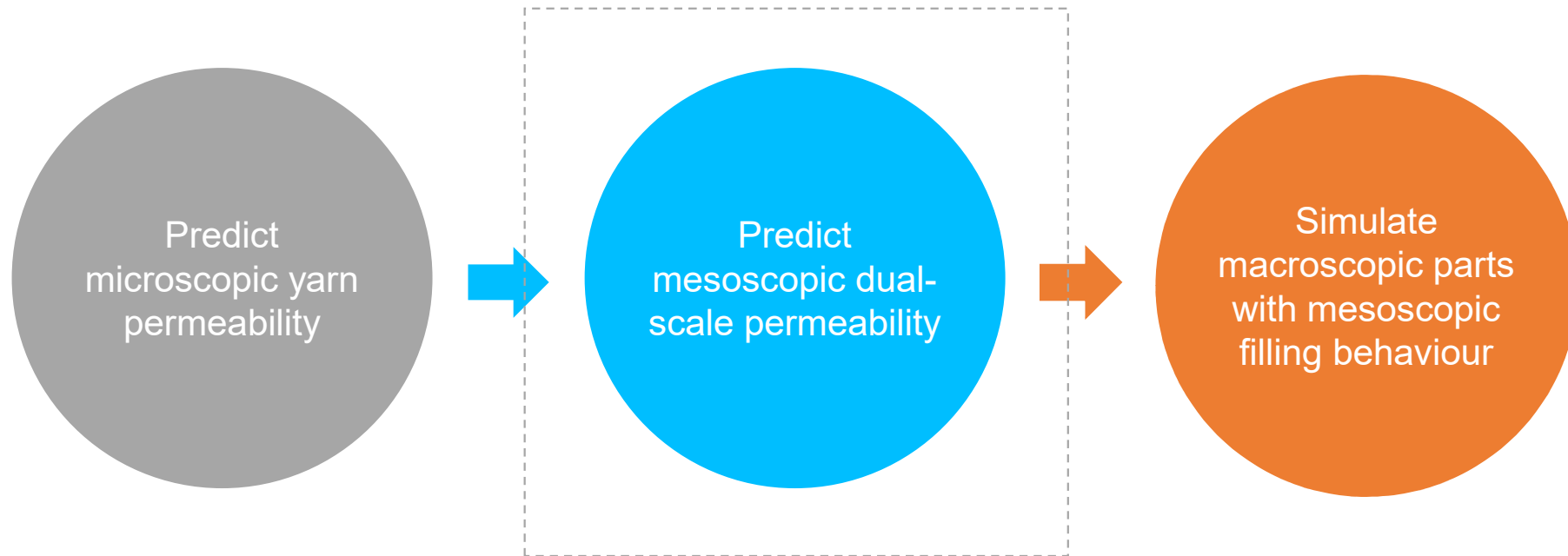


Inter tow flow + Intra tow flow = Dual scale flow

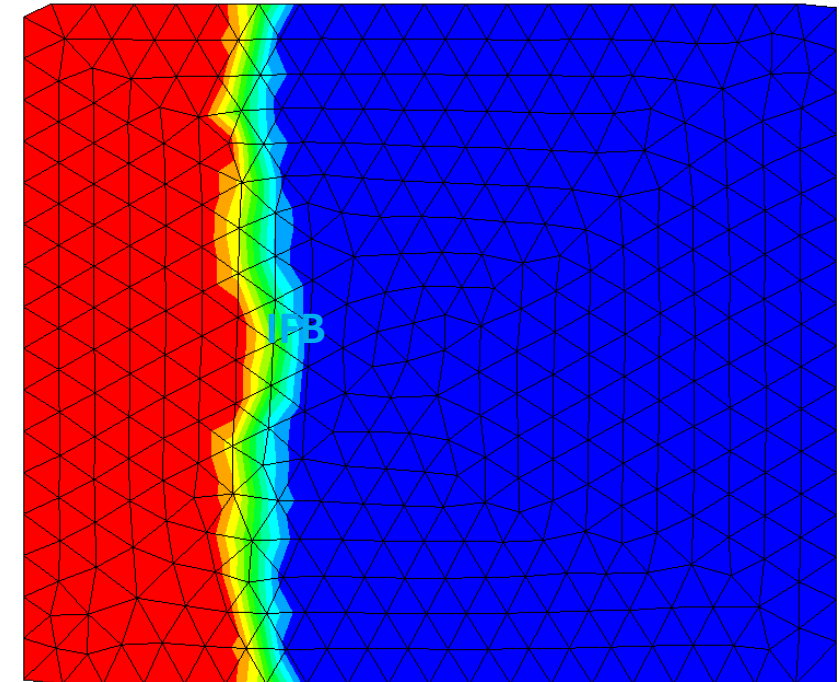
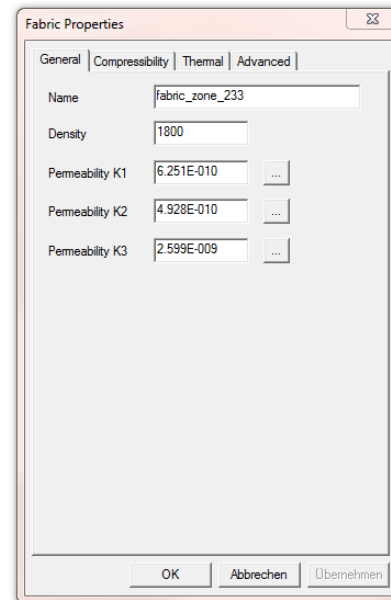
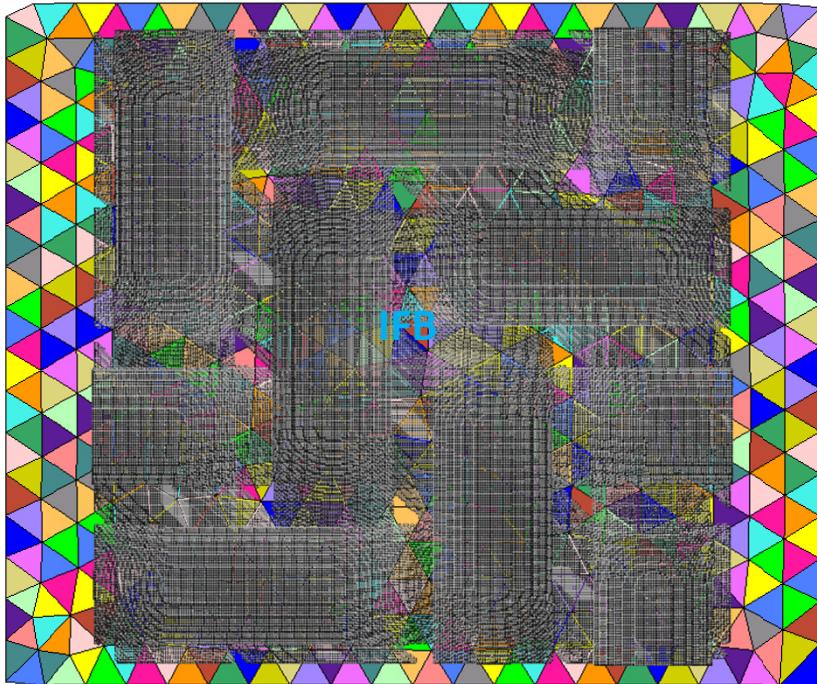


Mesoscopic braiding simulation



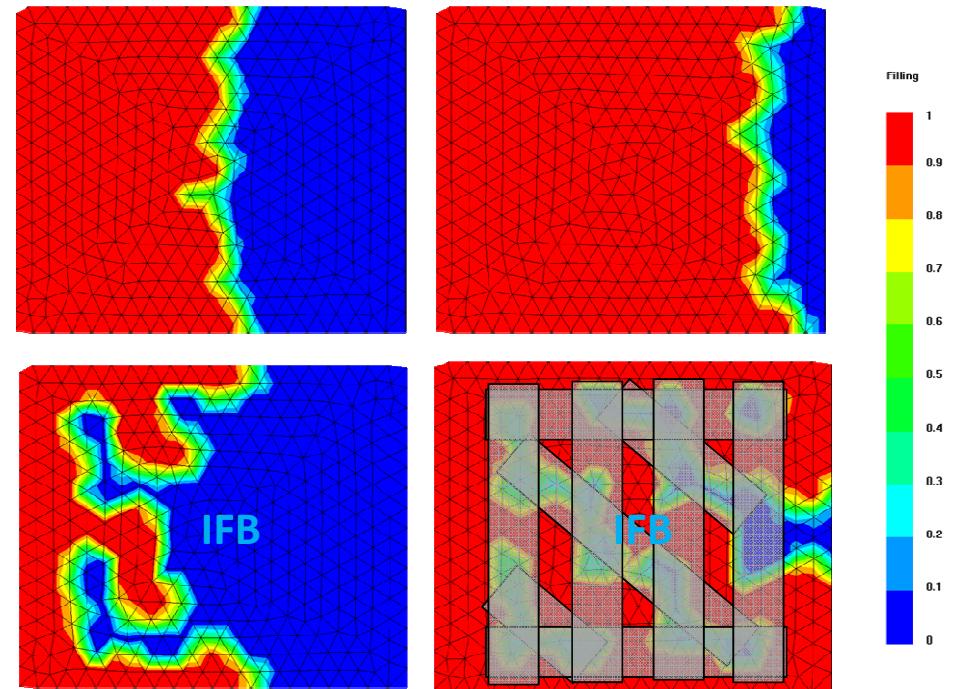
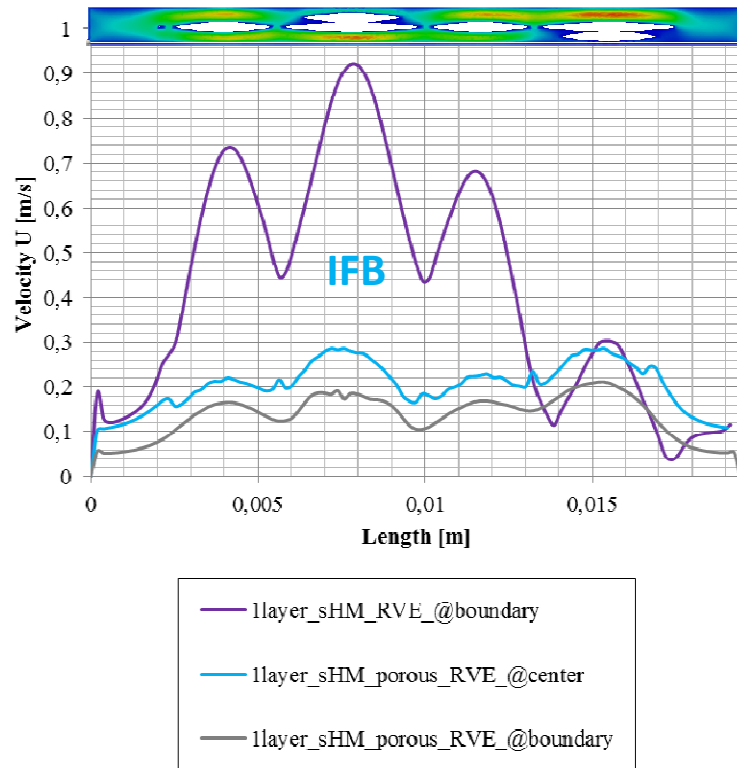


## MAPPING



Filling front, inlet variations, pressure field, etc. fast predictable & practicable

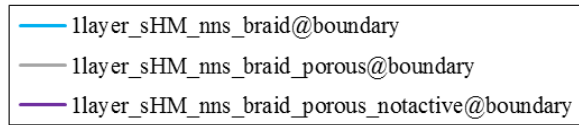
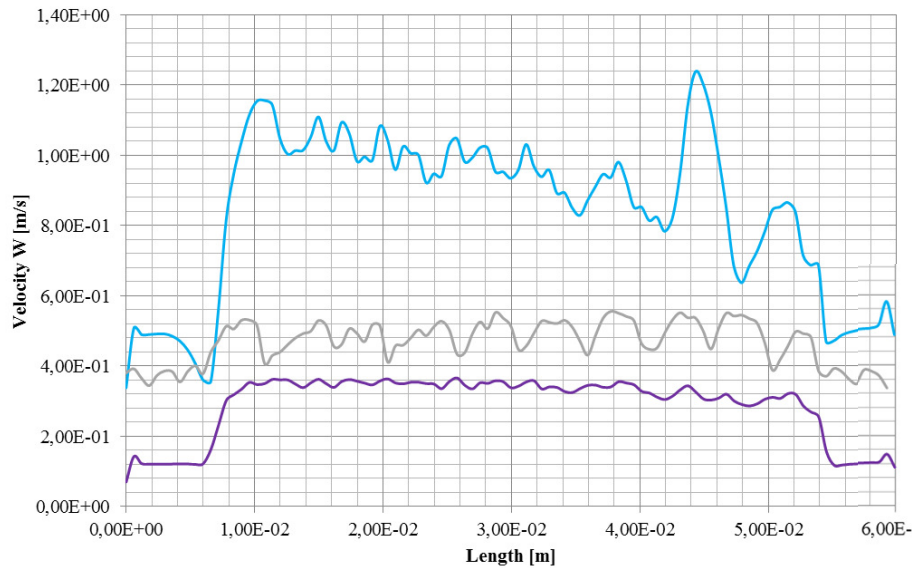
## Effect of porous yarns in flow simulation



A characteristic micro/meso simulation with a macroscopic mesh

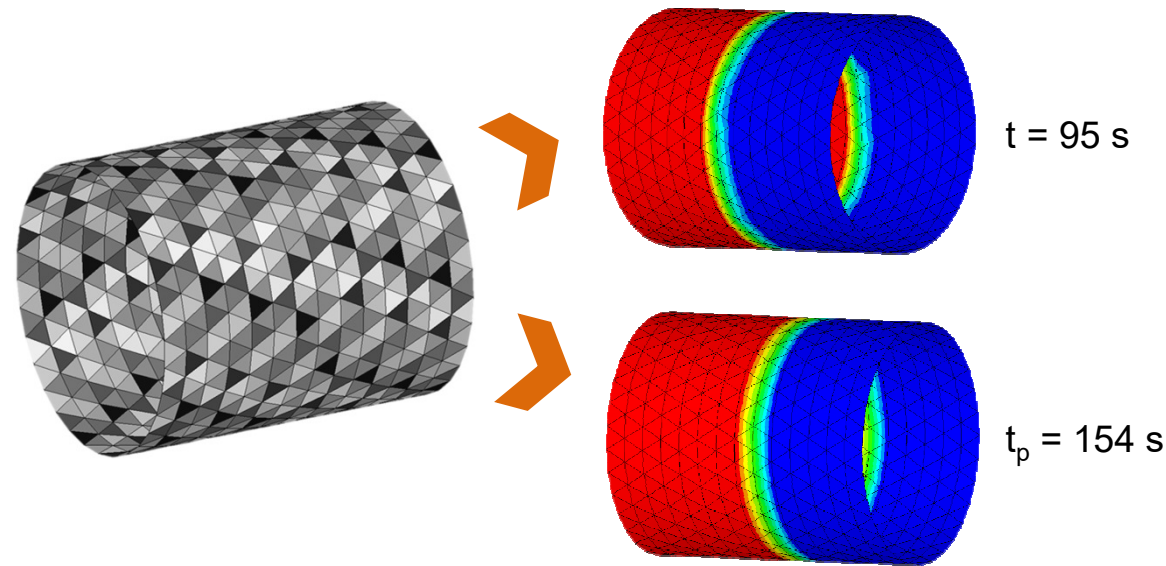


## Effect of porous yarns in flow simulation

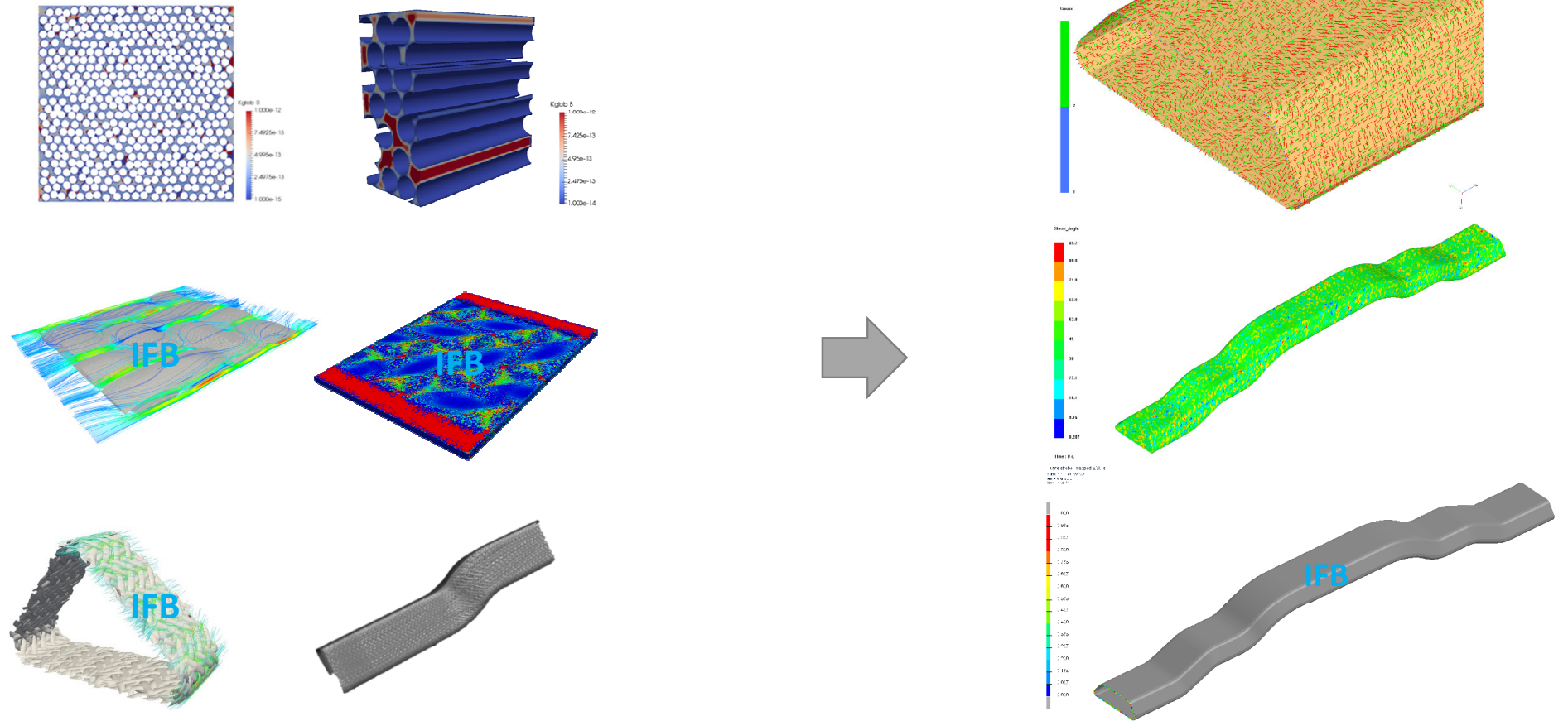


Mean permeability value:

- $\bar{K}_{1\text{layer\_sHM\_nns\_braid}}$  =  $9.26\text{e-}8 \text{ m}^2$  (without porous yarns)
- $\bar{K}_{1\text{layer\_sHM\_nns\_braid\_porous}}$  =  $1.41\text{e-}8 \text{ m}^2$  (with porous yarns)



**Porous yarns decrease the overall flow velocity and therefore the permeability values**



J. Dittmann, S. Hügler, P. Middendorf. „NUMERICAL 3D PERMEABILITY PREDICTION USING COMPUTATIONAL FLUID DYNAMICS”, FPCM13 Kyoto, Japan, 2016

Dittmann, J., Hügler, S., Seif, P., Kauffmann L. and Middendorf, P., Permeability Prediction Using Porous Yarns in a Dual-Scale Simulation with Openfoam, ICCM21 - 21st International Conference on Composite Materials, Xi'an, China, Aug 2017

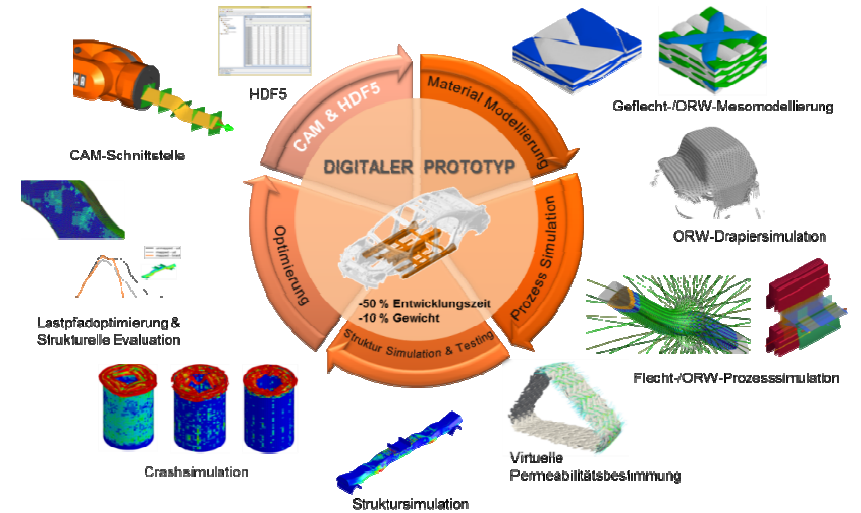
A large white circle is centered on a solid orange background. Inside the circle, the word "OUTLOOK" is written in a bold, grey, sans-serif font.

OUTLOOK

- Transfer multi-scale approach to other processes (wet moulding, APP, TFP, Pultrusion)
- Handle simulation challenges (meshing, post-processing)
- Simulate void formation and void transport



# ARENA2036 DigitPro



GEFÖRDERT VOM



Bundesministerium  
für Bildung  
und Forschung

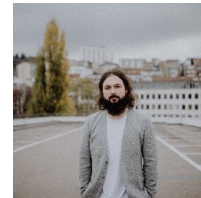
## FORSCHUNGS CAMPUS

öffentlich-private Partnerschaft  
für Innovationen



**PTKA**  
Projektträger Karlsruhe

Karlsruher Institut für Technologie



Dipl.-Ing. Jörg Dittmann  
dittmann@ifb.uni-stuttgart.de

Institut für Flugzeugbau  
Universität Stuttgart  
Pfaffenwaldring 31  
70569 Stuttgart